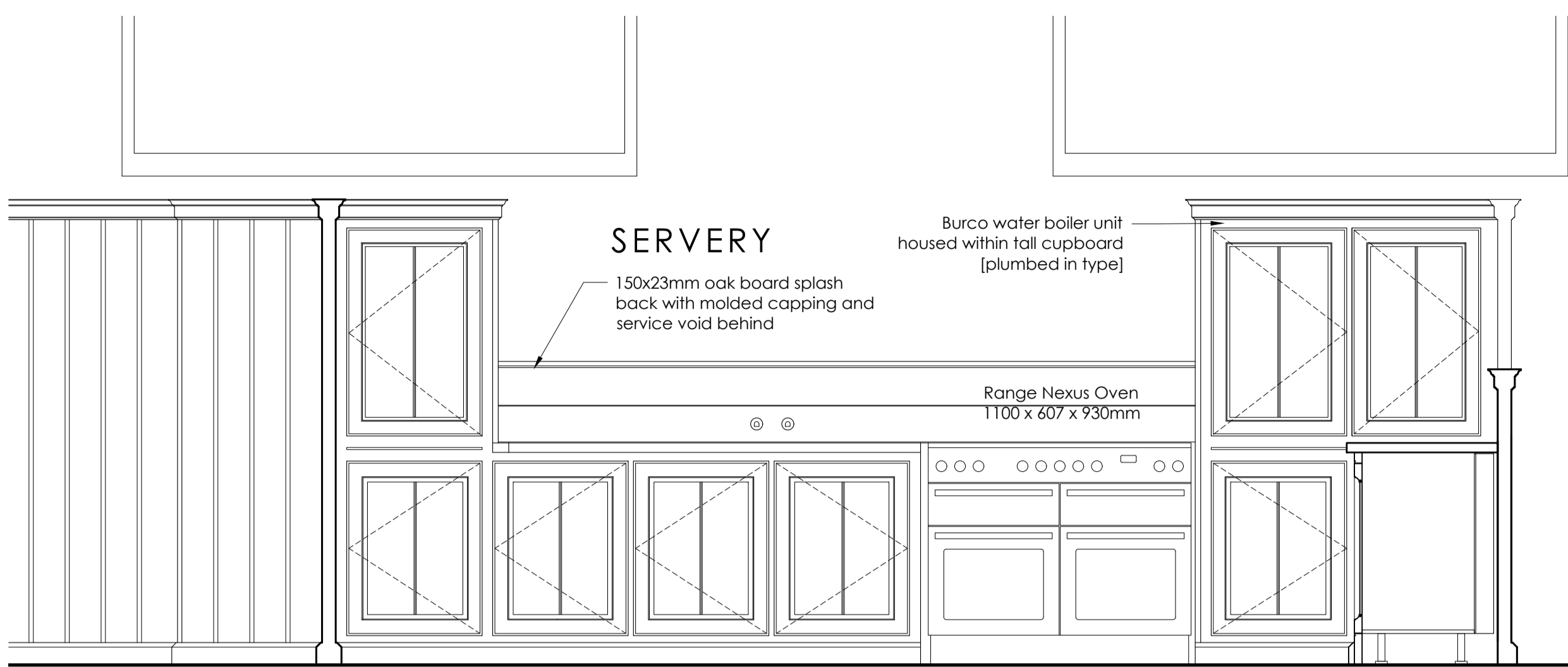
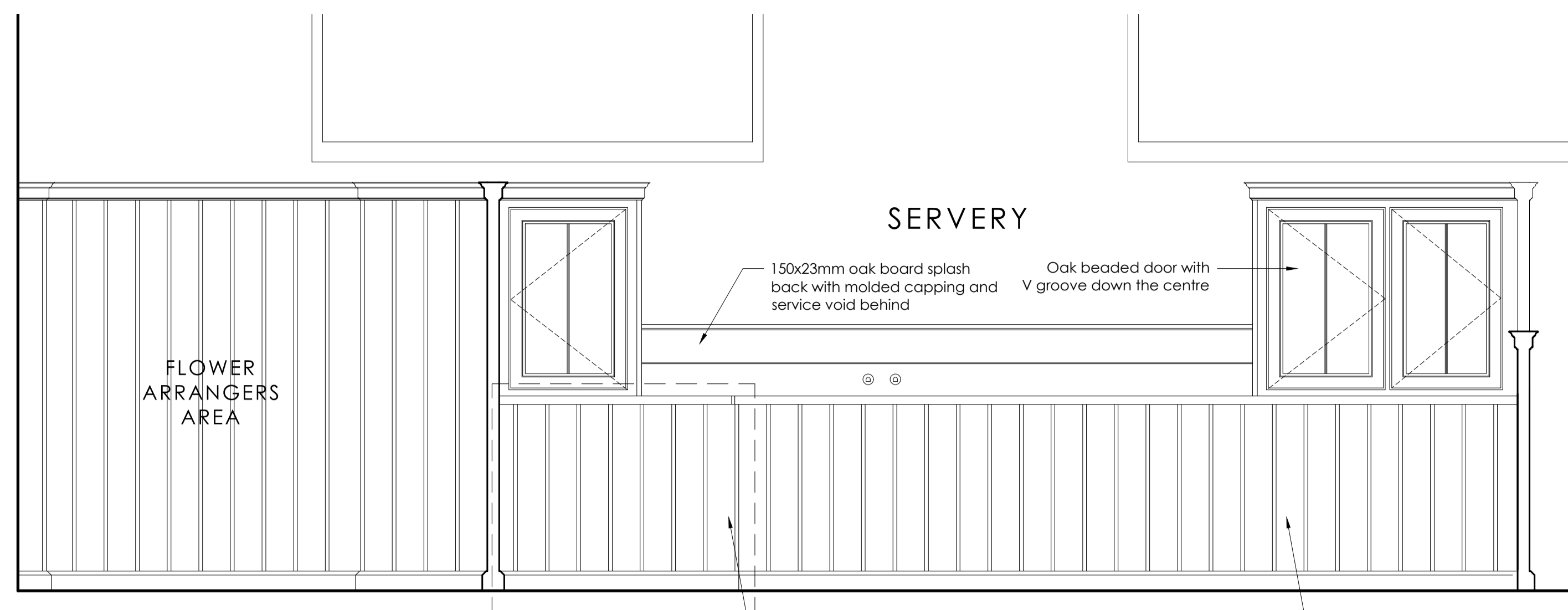


© This Drawing is the copyright of benjamin + beauchamp architects ltd.  
 All dimensions to be checked on site by contractor and not scaled from this drawing.  
 benjamin + beauchamp architects ltd accept no liability for any expense, loss or damage of whatsoever nature and however arising from any variation made to this drawing, or in the execution of the work to which it relates, which has not been referred to them and their approval obtained.  
 P:\Tiverton - St Peter - 0552\Drawings, Photos & Graphics\02 Drawings\Drawing board\4-WORKING DRAWINGS\0552.WD.16 Proposed Servery.dwg



Elevation 1



Elevation 2

**NOTES**  
 All cabinet fronts in oak, to receive stained finish (subject to decoration trials).

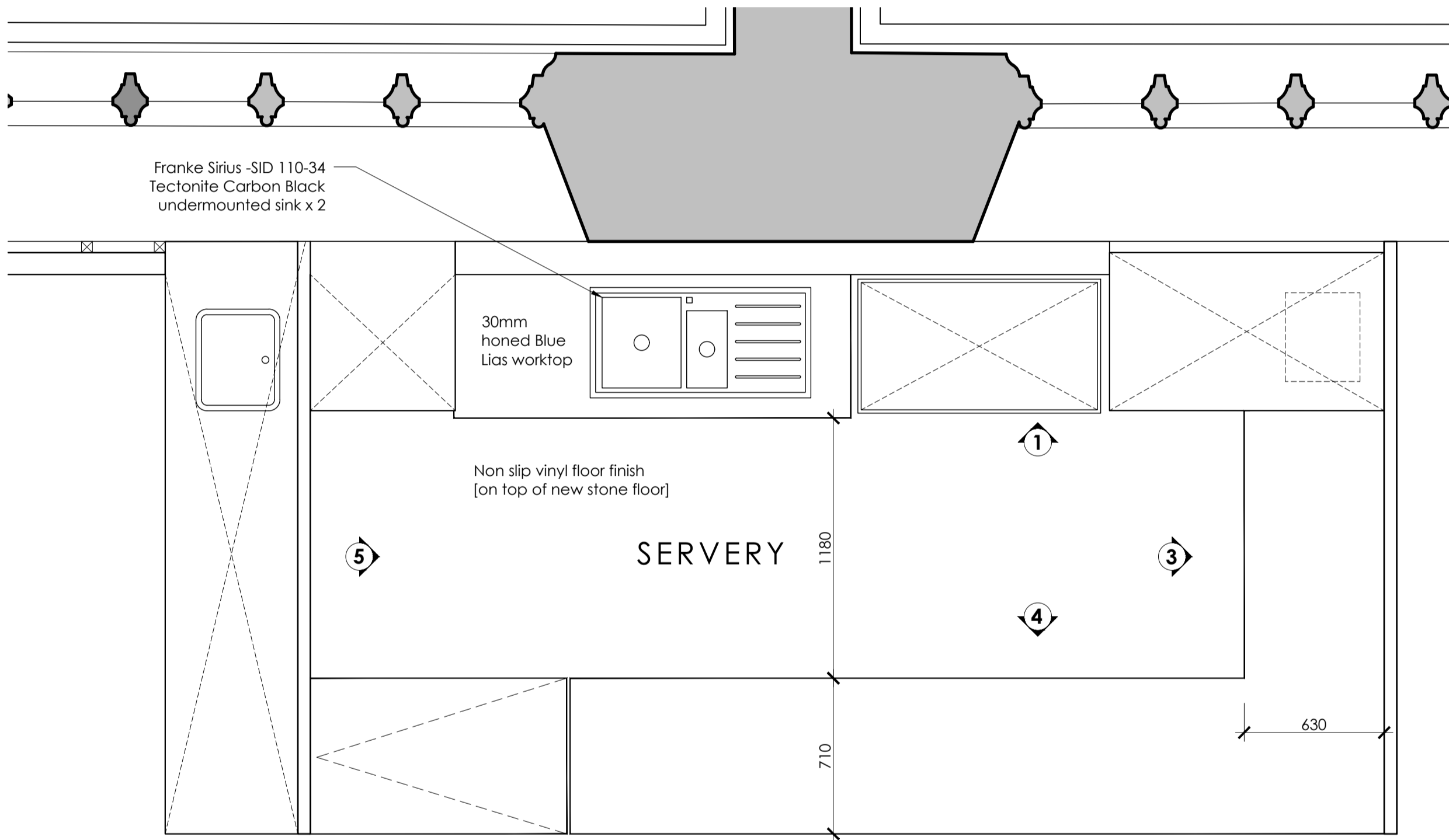
All cupboard doors hung on 1 pair brass 63mm butt hinges, fitted with oak knob and cupboard lock (with 3 keys).

All carcasses in birch faced ply finished with 3 layers clear water based varnish. All shelves on adjustable brackets and hardwood lipped.

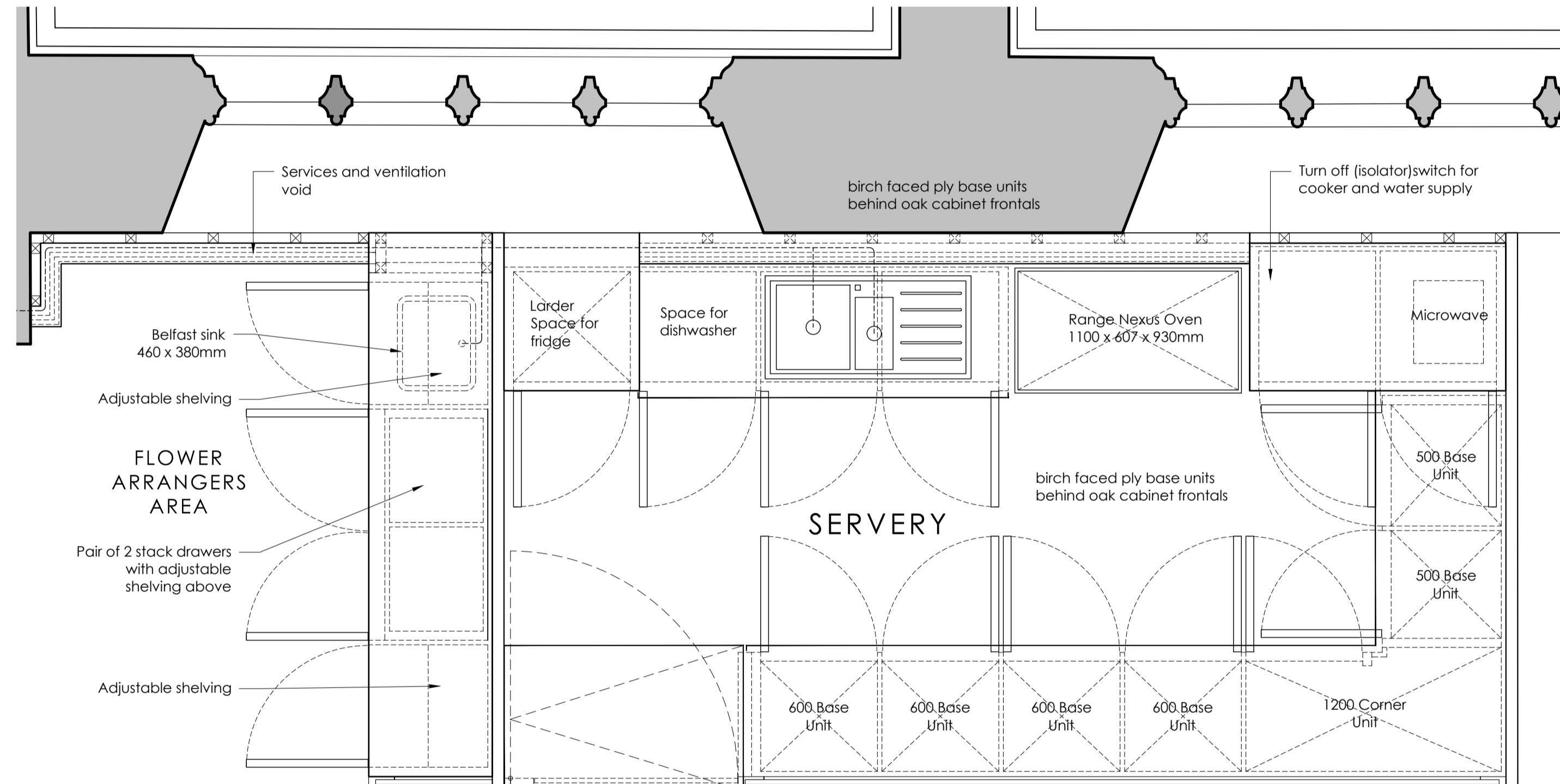
All carcasses on adjustable feet.

Kitchen designed to require only minimal fixings to the fabric of the church, to ensure reversibility.

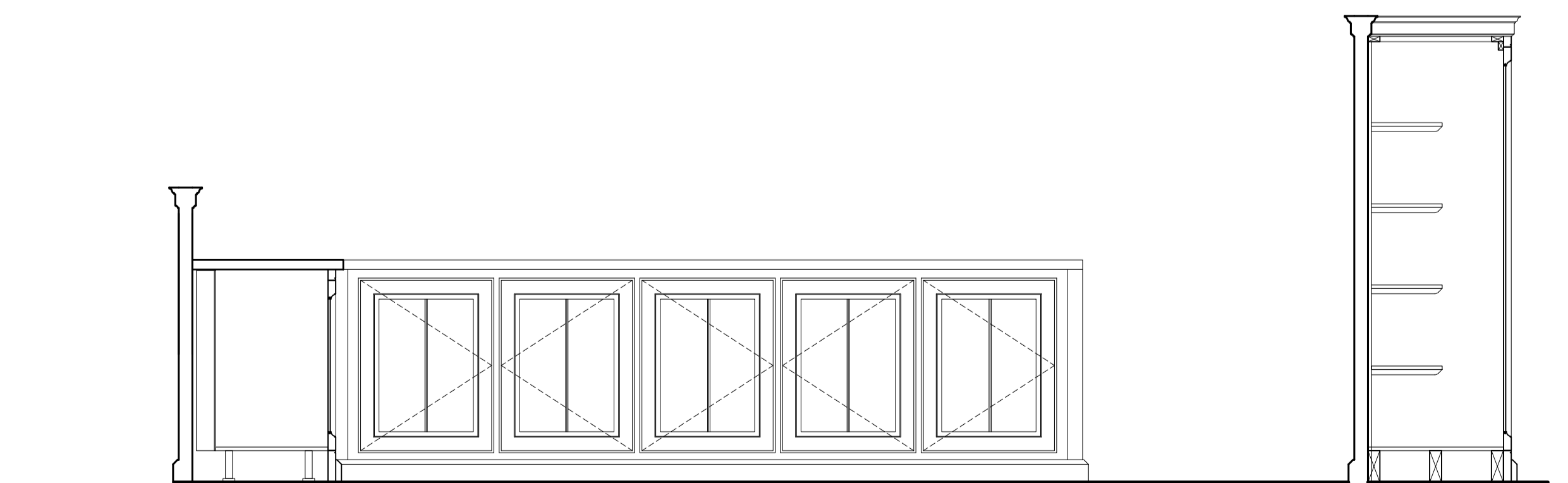
Electric and water supply to be isolated from within a lockable cupboard



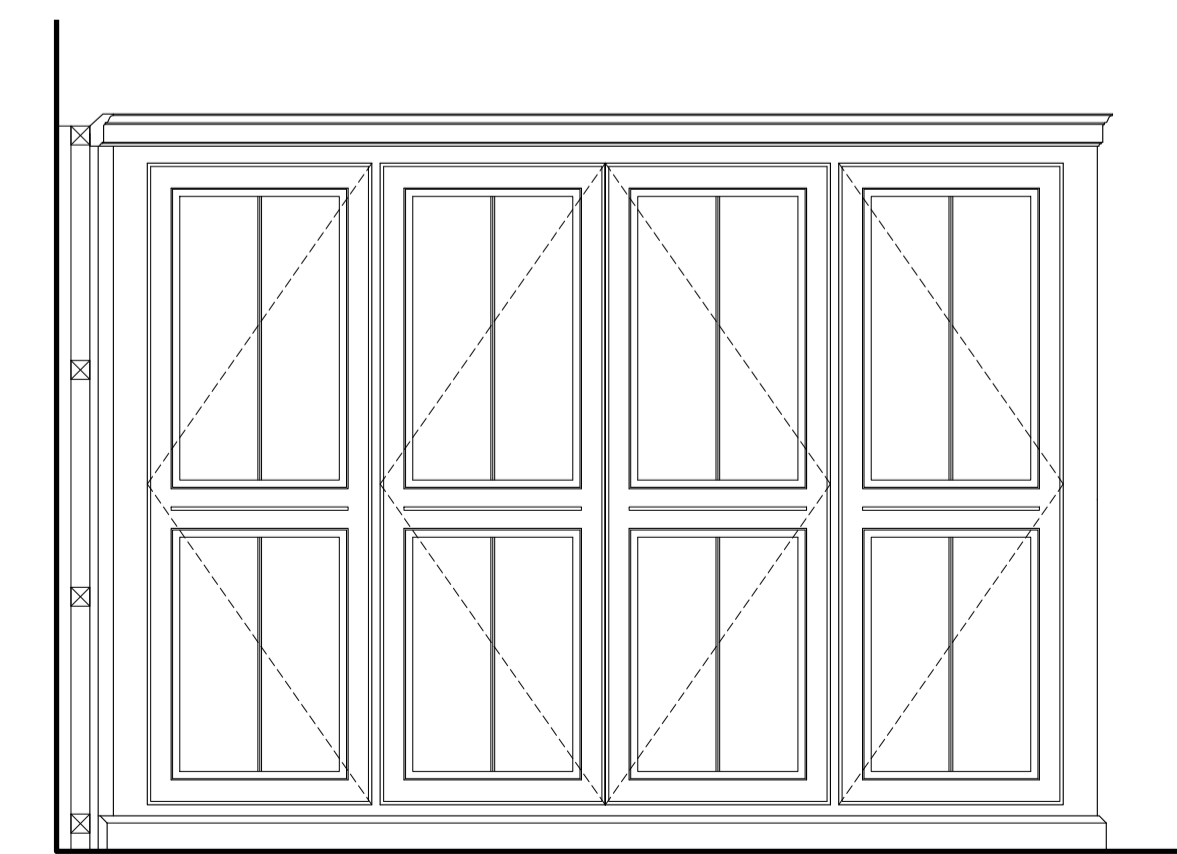
Cupboard and Worktop Plan



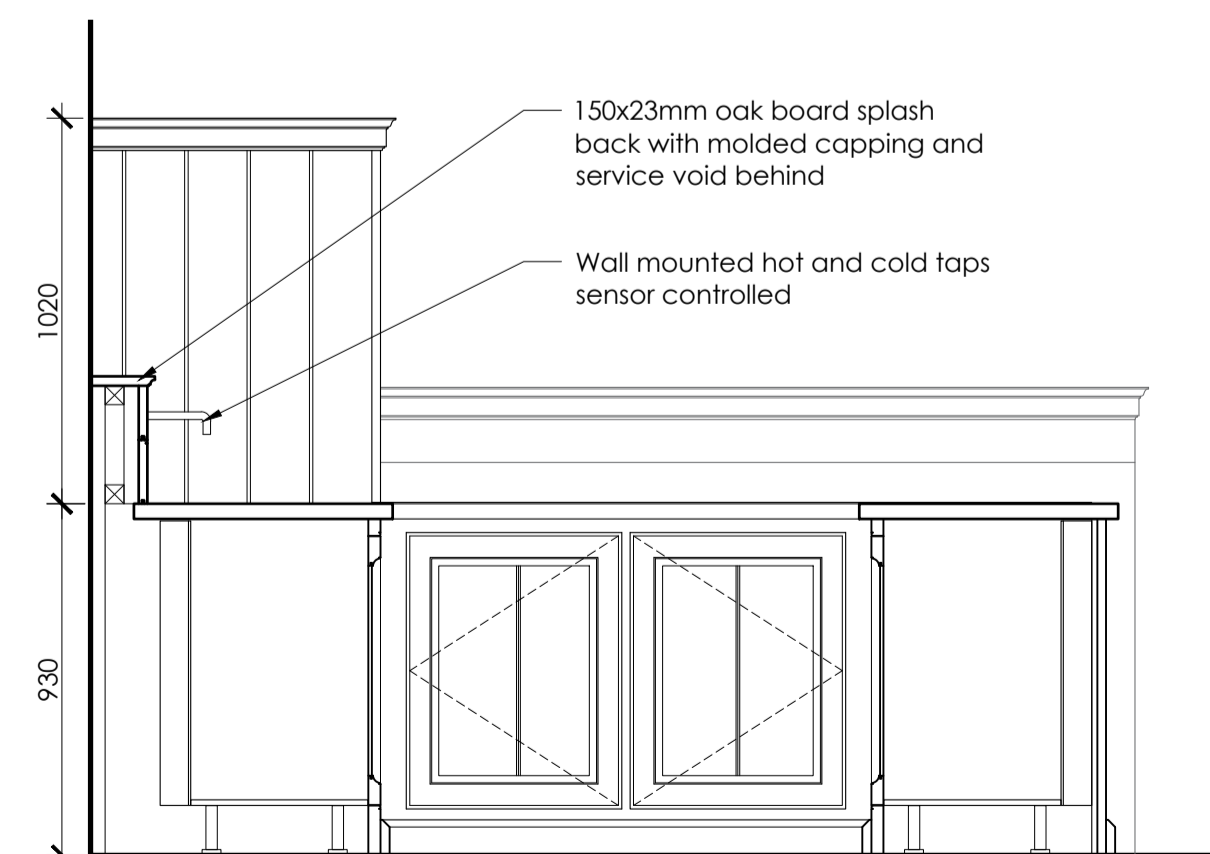
Cabinet Layout Plan



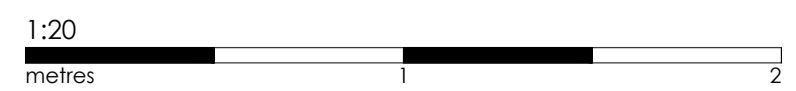
Elevation 4



Elevation 5 - Flower Arrangers Cupboard



Elevation 3 - Servery Eastern End



Revision Date Initials Issues

**TIVERTON**  
**St Peter**

Site

Servery & Flower Arrangers Area  
 As Proposed

Stage

**FOR APPROVAL**

**benjamin + beauchamp**  
 architecture design conservation  
 the borough studios, the borough,  
 wedmore, somerset BS28 4EB  
 T 01934 713313 F 01934 713314

Drawn By: LW & MV Date: 24.07.19 Scale: 1:20 @ A1  
 Drawing No: 0552.WD.16

www.benjamin-beauchamp.com